

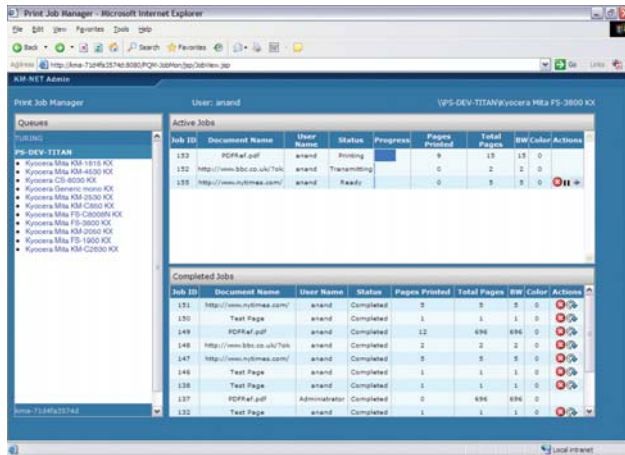
ADVANCED, FULLY-FEATURED PRINT QUEUE MANAGEMENT FOR YOUR NETWORK.

Key Benefits

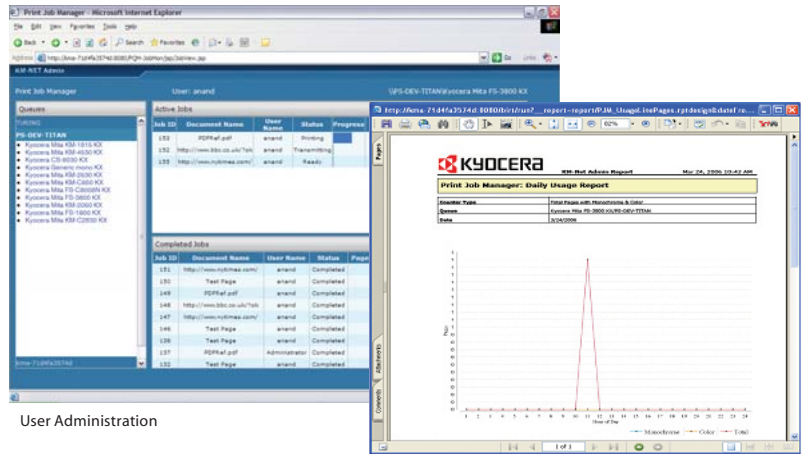
- Centralised, web-based administration of print queues and users
- Manages thousands of devices on multiple networks
- Requires no installation on client computers
- Detailed usage and ranking reports (KYOsupport required)
- Live display of print queues, current users, and their usage counters
- Built on state-of-the-art technologies including AJAX and J2EE
- Full integration with KMnet Admin for a unified software to network device management

KMnet Admin Print Job Manager

ENTERPRISE DEVICE MANAGEMENT SOFTWARE



Print Job Manager console



User Administration

Sample Report (KYOSupport required)

TECHNICAL REQUIREMENTS

Server Requirements

Microsoft Windows® 2000, Microsoft Windows® 2000 Server, Microsoft Windows® XP Professional, Microsoft Windows® Server 2003, Java™ JDK 1.4.2 or higher

Small to Medium Networks: 512MB RAM, 500MB hard disk space for installation and device database
Enterprise Networks: 1GB RAM, 2GB hard disk space for installation and device database

Client Operating System Requirements

Microsoft Windows® 95/98/ME, Microsoft Windows® 2000, Microsoft Windows® XP Professional, Microsoft Windows® Server 2003

Client Browser Requirements

Microsoft Internet Explorer 6

Supported Devices

Kyocera network devices and most third party network devices that support the standard printer MIB

ADMINISTRATION FUNCTIONS

Queue Creation

One-click conversion of existing print queues to managed queues, creation of managed queues by host name or IP address

Queue Management

Live display of queues and users with their current usage counters; add and remove device and user groups; reset usage counters for devices, users, and groups; generate usage and ranking reports; cancel, pause, resume, and reorder jobs; reprint a completed job; hold and release print jobs; confidential printing

Reporting (KYOSupport required)

Full complement of usage reports and rankings
Report Types: Total pages, monochrome pages, color pages, job counts, print data size — all by user, device, or group
Report Periods: Date, date range, week, month
Export Formats: HTML

Host Agent Functions

Start and stop service, specify port, configure queue management, setup server address, enable and disable job reprints, set completed job hold time in days

USER FUNCTIONS

Job Views

Real time display of jobs in print queue including owner name, computer, IP address, job status, document title, total pages, monochrome pages, color pages, pages printed, and progress information

Queue Operations

Users can cancel, pause, resume, reorder, and reprint jobs they own

Your Kyocera Business Partner:

KYOCERA MITA Europe B.V., Hoeksteen 40, 2132 MS Hoofddorp, The Netherlands, Tel +31 (0) 20 65 40 000, Fax +31 (0) 20 65 31 256, www.kyoceramita-europe.com, info@kyoceramita-europe.com
KYOCERA MITA Corporation, 2-28, 1-Chome, Tamatsukuri, Chuo-Ku, Osaka 540-8585, Japan, www.kyoceramita.com

Kyocera does not warrant that any specifications mentioned will be error-free. Specifications are subject to change without notice. Information is correct at time of going to press. All other brand and product names may be registered trademarks or trademarks of their respective holders and are hereby acknowledged.

