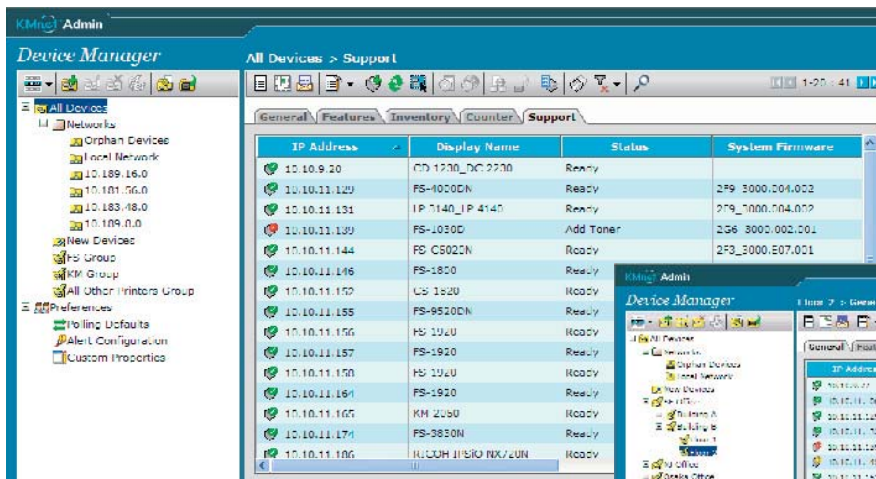


# ADVANCED DEVICE MANAGEMENT SOFTWARE.

KMnet Admin is Kyocera's unified device management software that uses a web-based platform to give network administrators easy and uncomplicated control over every device in the organisation. Tasks that used to require multiple programs or walking to each printer can now be accomplished in a single, fast, modern environment.

## Key Benefits

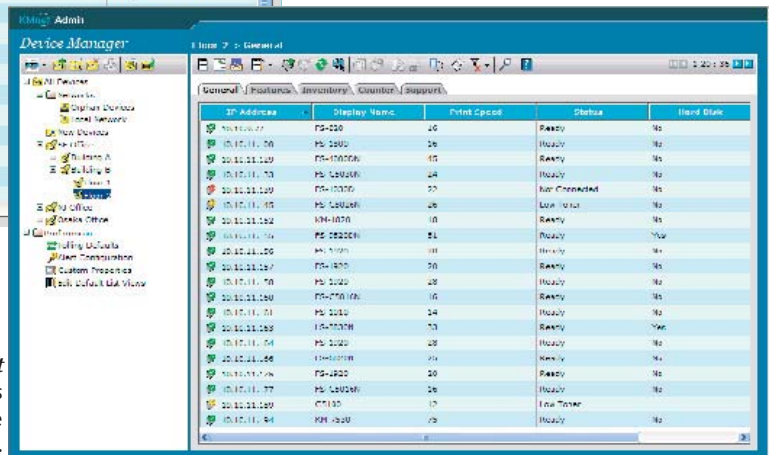
- Unified software for network device management
- Manages thousands of devices on multiple networks
- Web-based access for administrators and end-users that requires no installation on client computers
- Built using state-of-the-art technologies including AJAX and J2EE
- Built-in fleet configuration, firmware upgrade, and reporting tools (KYOSupport required)
- Powerful framework to build new add-ons and add capabilities
- Integrated Print Job Manager plug-in console provides all the tools for complete control over print jobs
- Integrated Accounting Manager plug-in console delivers a complete picture of what gets printed when, where, and by whom



KMnet Admin's Device Manager Window

## Network Device Management

KMnet Admin provides all the tools for device discovery, network device management and user management.



Device Management console

# KMnet Admin Product Overview

## ENTERPRISE DEVICE MANAGEMENT SOFTWARE

### MODERN & STREAMLINED ARCHITECTURE

#### **All-in-One Software**

Normally, network device management means having to use many different programs. KMnet Admin handles almost all administrative tasks in one application through a common interface.

#### **Modular, Standards-Based Architecture**

KMnet Admin is based on trusted, high-performance technologies including J2EE and AJAX.

Its modular approach enables Kyocera to add additional capabilities and support for future devices quickly and easily.

**Streamlined web-based interface** gives administrators the power to manage printers from any location.

### TAKE CONTROL OF YOUR PRINTERS AND MFPS

**Advanced device discovery** quickly finds all network devices and instantly records them in KMnet Admin's built-in database.

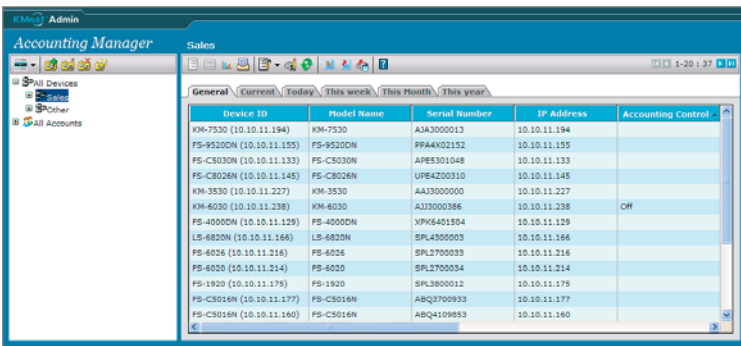
**Automatic and manual grouping** simplifies device management by allowing administrators to organize printers automatically according to feature, status, or description – or arrange them manually any way they prefer.

**Device Maps** allow administrators to record the location of printers so they can quickly find and troubleshoot problem devices.

**Batch and fleet configuration** simplify operations by allowing administrators to define printer settings once and then apply them to any number of devices.

**Scheduled and ad-hoc firmware updates** make it easy to keep all printers up-to-date and secure.

**Extensive Support for Third Party devices** makes KMnet Admin the ideal tool for mixed environments.



Device ID	Model Name	Serial Number	IP Address	Accounting Control
KM-7530 (10.10.11.194)	KM-7530	A3A3000013	10.10.11.194	
PS-95200N (10.10.11.155)	PS-95200N	PPA4K02152	10.10.11.155	
PS-C5030N (10.10.11.133)	PS-C5030N	APES301048	10.10.11.133	
PS-C8026N (10.10.11.148)	PS-C8026N	UPR4200310	10.10.11.148	
KM-3530 (10.10.11.227)	KM-3530	A433000000	10.10.11.227	
KM-6020 (10.10.11.238)	KM-6020	A123000366	10.10.11.238	
PS-4000N (10.10.11.129)	PS-4000N	NPK6401594	10.10.11.129	OFF
LS-6820N (10.10.11.166)	LS-6820N	SPL4300003	10.10.11.166	
PS-6026 (10.10.11.216)	PS-6026	SPL2700033	10.10.11.216	
PS-6020 (10.10.11.214)	PS-6020	SPL2700034	10.10.11.214	
PS-1920 (10.10.11.178)	PS-1920	ABQ3800012	10.10.11.178	
PS-C5016N (10.10.11.177)	PS-C5016N	ABQ3700933	10.10.11.177	
PS-C5016N (10.10.11.160)	PS-C5016N	ABQ4199853	10.10.11.160	

Accounting Manager Console

### SOLVE POTENTIAL PROBLEMS BEFORE THEY IMPACT USERS

**Sophisticated alert and subscription management** ensures that every printer error and warning gets sent to the right people immediately.

**Supply and maintenance warnings** enable administrators to replenish supplies and place service calls before end-users are affected.

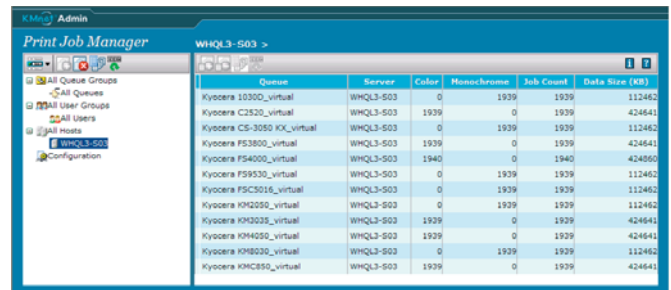
### LOWER COSTS AND LESS WASTE

**Authoritative Job Accounting** puts the organisation's administrators back in control of print-related costs, reduces waste, and helps optimize device usage.

KMnet's Accounting Manager can create recurring reports that can be automatically distributed to stakeholders via email. (KYOsupport required)

Accounting Manager can also be used to create departmental billing or charge back solutions for documents sent to networked printers, copiers, or multi-function devices.

**Easy-to-use reporting tools** in each console show exactly how printers are used with just a few mouse clicks. This information can be used to optimize printing environments and accurately project future needs. (KYOsupport required)



Queue	Server	Color	Monochrome	Job Count	Data Size (KB)
Kyocera 10300_virtual	WHQL3-503	0	1939	1939	112462
Kyocera C2520_virtual	WHQL3-503	1939	0	1939	424641
Kyocera CS-3050_KK_virtual	WHQL3-503	0	1939	1939	112462
Kyocera FS3800_virtual	WHQL3-503	1939	0	1939	424641
Kyocera FS4000_virtual	WHQL3-503	1940	0	1940	424860
Kyocera FS9530_virtual	WHQL3-503	0	1939	1939	112462
Kyocera FSC3016_virtual	WHQL3-503	0	1939	1939	112462
Kyocera KM2050_virtual	WHQL3-503	0	1939	1939	112462
Kyocera KM2025_virtual	WHQL3-503	1939	0	1939	424641
Kyocera KM2020_virtual	WHQL3-503	1939	0	1939	424641
Kyocera KM2020_virtual	WHQL3-503	0	1939	1939	112462
Kyocera KM2850_virtual	WHQL3-503	1939	0	1939	424641

Print Job Manager Console

### Print Job Management

The Print Job Manager console provides effective server-side control of print usage. It lets administrators install and configure print queues on Windows 2000 and Windows XP print servers, monitor their use, control and reassign print jobs, and set device and user policies directly in KMnet Admin.

### Print Accounting

The Accounting Manager console offers advanced, fully featured print accounting for your network directly from KMnet Admin.

### TECHNICAL SPECIFICATIONS

#### Server Requirements

Microsoft Windows® 2000, Microsoft Windows® 2000 Server, Microsoft Windows® XP Professional, Microsoft Windows® Server 2003, Java™ JDK 1.4.2 or higher

Small to Medium Networks: 512MB RAM, 500MB hard disk space for installation and device database

Enterprise Networks: 1GB RAM, 2GB hard disk space for installation and device database

#### Client Operating System Requirements

Microsoft Windows® 95/98/ME, Microsoft Windows® 2000, Microsoft Windows® XP Professional, Microsoft Windows® Server 2003

#### Client Browser Requirements

Microsoft Internet Explorer 6

#### Supported Devices

Kyocera network devices and most third party network devices that support the standard printer MIB

### Your Kyocera Business Partner:

KYOCERA MITA Europe B.V., Hoeksteen 40, 2132 MS Hoofddorp, The Netherlands, Tel +31 (0) 20 65 40 000, Fax +31 (0) 20 65 31 256, www.kyoceramita-europe.com, info@kyoceramita-europe.com  
KYOCERA MITA Corporation, 2-28, 1-Chome, Tamatsukuri, Chuo-Ku, Osaka 540-8585, Japan, www.kyoceramita.com

Kyocera does not warrant that any specifications mentioned will be error-free. Specifications are subject to change without notice. Information is correct at time of going to press. All other brand and product names may be registered trademarks or trademarks of their respective holders and are hereby acknowledged.

